



Impact
Report

2021

Thank You

Our Mission

To proclaim Jesus Christ as Lord
and to demonstrate His love
by providing affordable, quality health care.



Don Branum
Chief Executive Officer

Thank you for your generous support in 2021. You care about people that need affordable health care and you did something about it.

These are individuals and families with limited options for affordable medical and dental care.

More than just 'sick care,' we're committed to providing 'whole-person care' that touches mind, body and spirit.

Your support helped

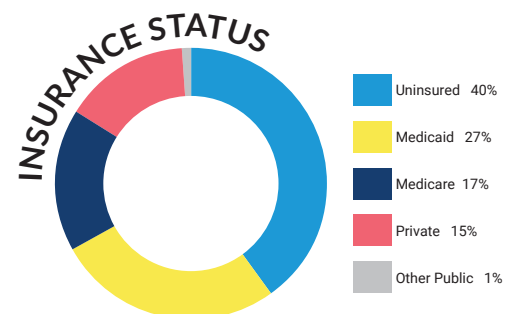
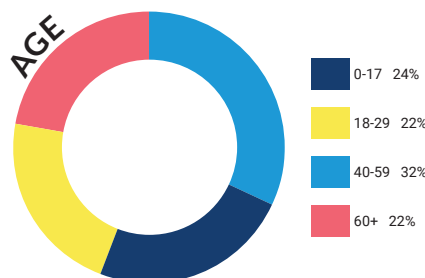
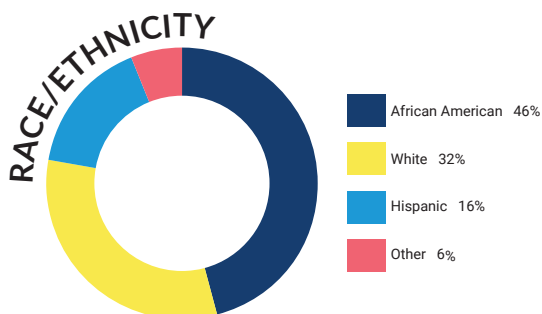
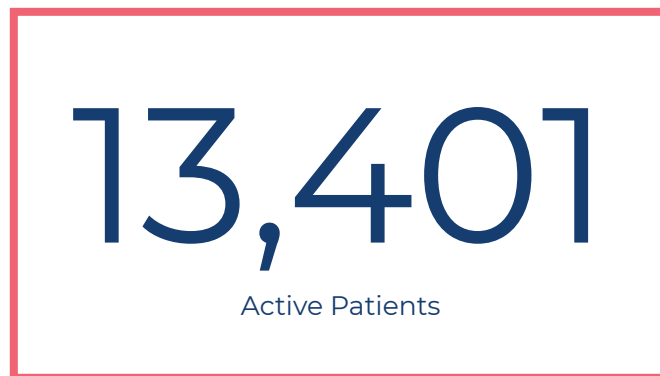
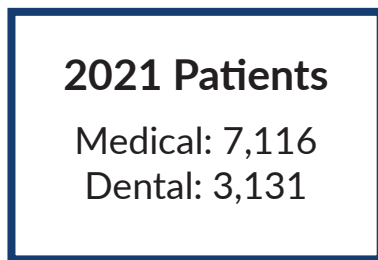
- Provide almost 9,000 people with health care so they can stay on the path to wellness. You can read about some of them in this Donor Impact Report. You will be encouraged by their stories.
- Open our 3rd clinic on Peach Orchard Road in south Augusta. Families in that part of Augusta now have easier access to care.
- Expand our Integrated Behavioral Health Program that blends care for medical and behavioral health issues in one setting.

Your prayers and your investment in the wellness of our patients demonstrate that you truly love your neighbors and care about the least of these in our community.

Gratefully,

A handwritten signature in blue ink, appearing to read "Don Branum". The signature is fluid and cursive, with a long horizontal line extending to the right.

Patient Statistics



Your gift helped Francis get dentures



Because of your faithful support, Francis doesn't have tooth pain anymore.

Francis, 42, never went to the dentist.

Like many of our patients, Francis is on a fixed, low income and can't afford to get dental care anywhere else.

"I first came here to get a tooth pulled," said Francis. "If Christ Community wasn't here, I would still be paying an astronomical amount for doctor visits. I had a lot of problems with my teeth."

Without your help, Francis would still live with tooth pain.

Unfortunately, drugs had destroyed Francis' teeth.

"I was an active drug addict for almost 20 years. It was a long process with tooth pain, and I was constantly getting them pulled," explained Francis.

"It was a direct result of my actions – the life that I chose as a drug addict. It's okay - it gave me a real powerful testimony," explained Francis.

Because of your support, Francis was able to get dentures.

"It is a blessing because I don't have to deal with tooth pain anymore. Next month, I will be celebrating 5 years of sobriety!"

"The people who donate to this organization are helping save lives," said Francis. "Christ Community has helped change my life, and it's all for the kingdom."

Will you help more neighbors like Francis get affordable, quality dental care?

“

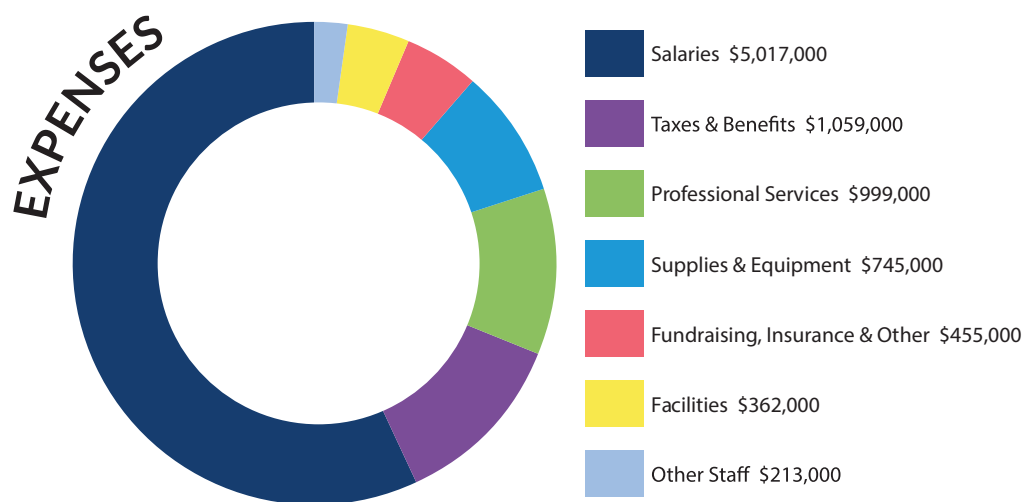
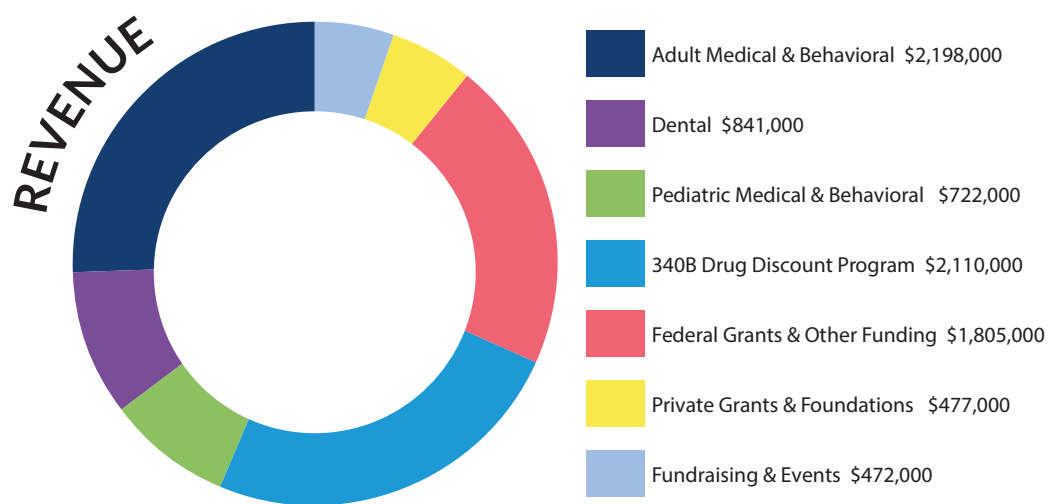
If Christ Community wasn't here, I would still be paying an astronomical amount for doctor visits. I had a lot of problems with my teeth.

”

Financials

2021 Operating Revenue | \$8.63 M* 2021 Operating Expenses | \$8.85 M

Year Ending Dec. 31, 2021
(Unaudited)



*Revenues exclude approx. \$1.1 million of one-time, COVID-related supplemental federal grant awards.

Your gift provided prenatal visits to mothers with high-risk pregnancies

Without resources or medical care, Heiry and her husband Luis came to Christ Community looking for help.

the pregnancy of my wife, my son became a patient, and I became a patient. This a family matter for us, and we are grateful.”

In 2019, Heiry was pregnant with a high-risk pregnancy, and she didn't have health insurance.

Please send a gift to help another family struggling with high-risk pregnancy today!

A “high-risk” pregnancy is when a woman has one or more conditions that raise her — or her baby’s — chances for health problems or preterm (early) delivery.

According to the March of Dimes, Hispanics account for nearly one out of every four (23.2%) babies born preterm in the United States.

Because of your donation, Heiry was able to receive quality prenatal and postpartum medical care.

Not only did Heiry’s health improved - but her husband and children became Christ Community patients.

“When I first came to Christ Community, I was searching for help for my wife. I didn’t have any way to cover all the expenses of the pregnancy,” explained Luis. “Based on



From Left to Right: Luis, Matias and Heiry
Because of your donation, Heiry was able to receive quality prenatal and postpartum medical care.

“ I didn’t have any way to cover all the expenses of the pregnancy. ”

Peach Orchard



Peach Orchard Staff
Opening Day - November 29, 2021

**Thank you for supporting
our newest clinic
location!**

Because of your support, Christ Community opened its third clinic located in south Augusta in November 2021. You helped make checkups, screenings and blood work more accessible to our south Augusta neighbors. This clinic is closer for south Augusta families and it helps make room to serve more patients at our other clinics.



Glenn and Rhonda Barinowski
Christ Community Champions

**Thank You
Christ Community
Champions**

“We have chosen to give to Christ Community monthly because we fully support the mission... to proclaim Jesus Christ as Lord and to demonstrate His love by providing affordable, quality primary health care to the under-served. It is our privilege to come alongside Christ Community and be able to be a part of impacting our community in such a positive way. We are honored to be able to partner with Christ Community so that the providers can be the hands and feet of the Lord Jesus in the CSRA.”

- Glenn and Rhonda Barinowski



Christ Community Health

P.O. Box 2344
Augusta, GA 30903
(706) 922-0600
www.cchsaugusta.org